

All information contained herein applies only to the above listed part number. Other versions of this part number with electrical or mechanical variations are available. Contact CUI Inc. for further assistance. 9615 SW Allen Blvd., Ste. 103, Beaverton OR 97005  
 800-275-4899 • 503-643-4899 • Fax: 503-643-6129 • www.cui.com

1. CONSTRUCTION:

- 1. 1 Surface: Damage, rust, foam not permitted.
- 1. 2 Lead pull test: \_\_\_\_\_ Kg for \_\_\_\_\_ Seconds.
- 1. 3 Impregnation: Varnish.
- 1. 4 Lead wire description:

Terminal No.	1	2	3	4	5	6	7	8	9	10
Color										
Length (mm)										
Strip/Tin (mm)										
Class										

2. ELECTRICAL CHARACTERISTICS:

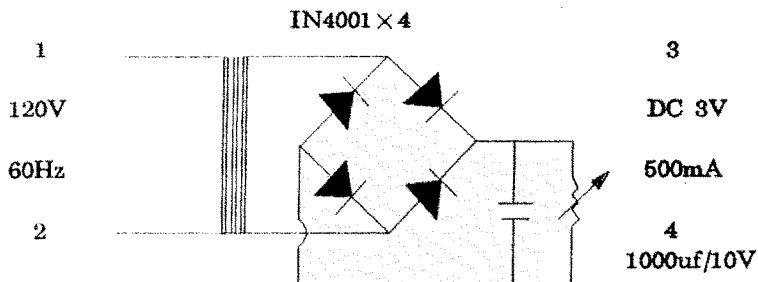
- 2. 1 Exciting Current: Input primary 120 V 60 Hz 50 mA MAX.
- 2. 2 Primary rated voltage & frequency 120 V 60 Hz.
- 2. 3 Secondary output voltage:

Leads No. or Color	Rated Voltage	Rated Current	Voltage Regulation	No Load Voltage
3-----4	DC 3V±5%	DC 500mA		DC 5. 9V±5%

- 2. 4 HI-POT test: Input 60Hz 1500 V for one minute between Primary and Secondary and between Primary to Core 1000 V for one minute between Secondary and Secondary and between Secondary to Core.
- 2. 5 Induced Voltage: At Secondary open input Primary 400Hz 240 V for 15 seconds.
- 2. 6 Insulation test: 500Vdc 100Megohm Min. between Windings and Windings and Core.
- 2. 7 Humidity test: Temp 32±2°C relative humidity 90% RH for 6 hours, after keeping 30 minutes following insulation must be larger than 5 Megohm.
- 2. 8 Temperature rise test: Less than 70 °C for rated test with Resistance method.

3. Safety Standard: UL/CUL.

4. Circuit Diagram:







All information contained herein applies only to the above listed part number. Other versions of this part number with electrical or mechanical variations are available. Contact CUI Inc. for further assistance. 9615 SW Allen Blvd., Ste. 103, Beaverton OR 97005  
800-275-4899 • 503-643-4899 • Fax: 503-643-6129 • www.cui.com

